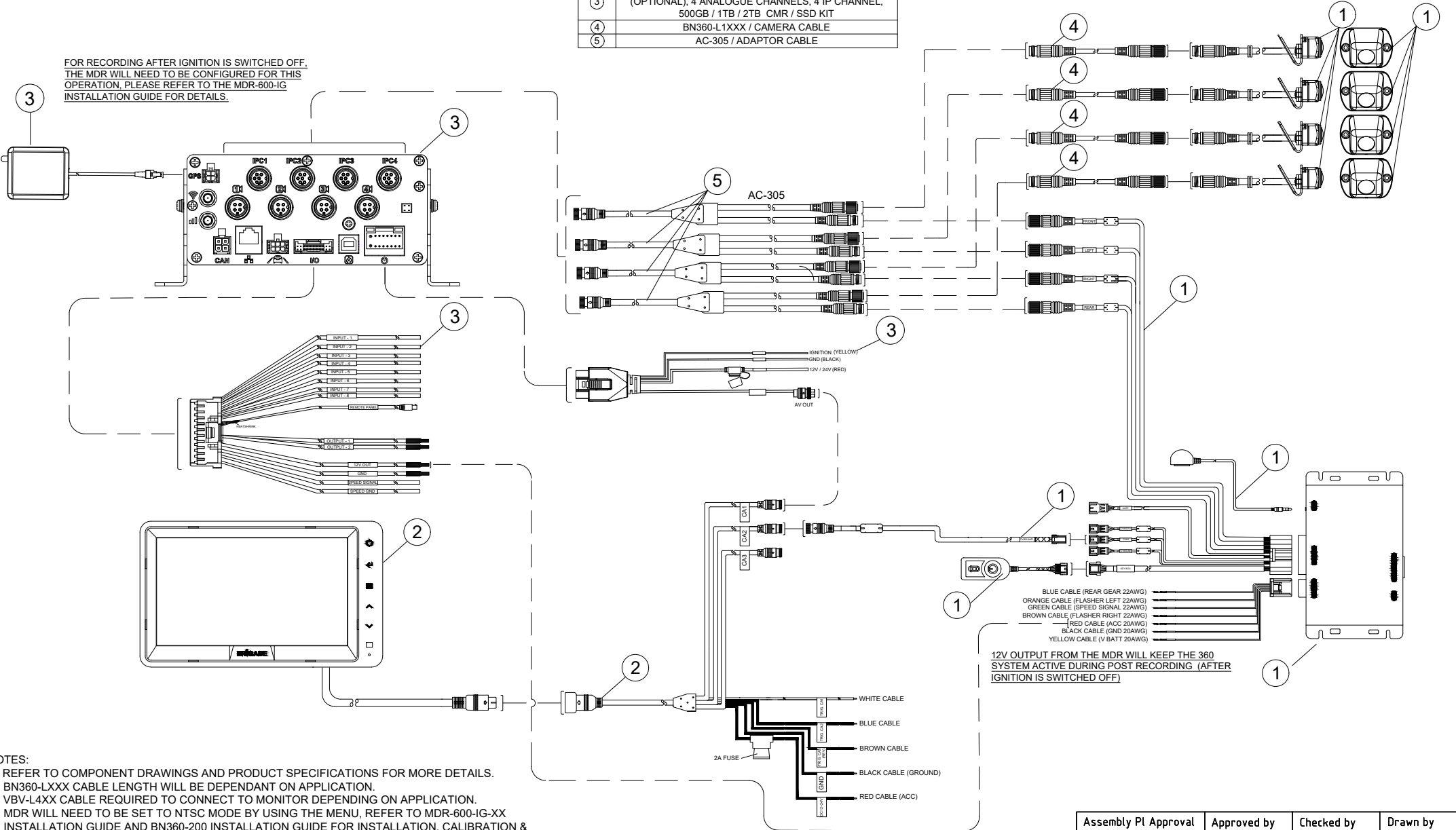


ITEM	MODEL / DESCRIPTION
①	BN360-200 / BACKKEYE 360 SELECT
②	VBV-770M / MONITOR KIT
③	MDR-644XX-X-XXX / MDR-600 4G (OPTIONAL) & WIFI (OPTIONAL), 4 ANALOGUE CHANNELS, 4 IP CHANNEL, 500GB / 1TB / 2TB CMR / SSD KIT
④	BN360-L1XXX / CAMERA CABLE
⑤	AC-305 / ADAPTOR CABLE

Revision Notes.				
APA: -	Drawn:	Checked:	Approved:	Date:

FOR RECORDING AFTER IGNITION IS SWITCHED OFF, THE MDR WILL NEED TO BE CONFIGURED FOR THIS OPERATION. PLEASE REFER TO THE MDR-600-IG INSTALLATION GUIDE FOR DETAILS.



- NOTES:
- REFER TO COMPONENT DRAWINGS AND PRODUCT SPECIFICATIONS FOR MORE DETAILS.
 - BN360-LXXX CABLE LENGTH WILL BE DEPENDANT ON APPLICATION.
 - VBV-L4XX CABLE REQUIRED TO CONNECT TO MONITOR DEPENDING ON APPLICATION.
 - MDR WILL NEED TO BE SET TO NTSC MODE BY USING THE MENU, REFER TO MDR-600-IG-XX INSTALLATION GUIDE AND BN360-200 INSTALLATION GUIDE FOR INSTALLATION, CALIBRATION & CONFIGURATION OF THE SYSTEM.
 - TRIGGER CONNECTIONS DEPENDENT ON APPLICATION.
 - REFER TO MDR-600-IG-XX INSTALLATION GUIDE FOR DETAILS OF ADDITIONAL CONNECTION.

PROPRIETARY NOTICE
 THIS DESIGN AND TECHNICAL INFORMATION APPEARING ON THIS DRAWING IS THE PROPERTY OF BRIGADE ELECTRONICS, AND IS DISCLOSED IN CONFIDENCE. IT IS NOT TO BE COPIED, REPRODUCED, REVEALED TO OR EXPROPRIATED BY OTHERS, EITHER IN WHOLE OR IN PART WITHOUT THE EXPRESS WRITTEN CONSENT OF BRIGADE ELECTRONICS.



Assembly Pl Approval N/A	Approved by A. KEBEDE	Checked by S. GOVENDER	Drawn by S. ZHANG
Angle of Projection 	Units mm	Scale N/A	Released 20/02/23
	Status RELEASED	SELECT 360 WITH MDR-644	
	Part No N/A	BE-004579-00-21	